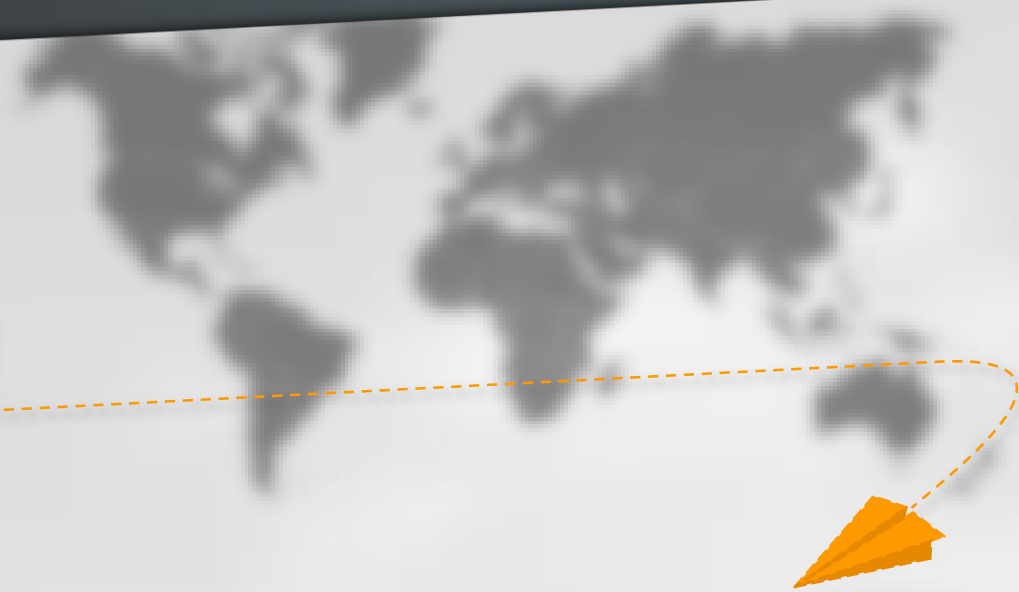


ADLUX

BUSINESS AVIATION INSIGHT

November 2015



WINGX
ADVANCE

INSIGHT Issue: November 2015
Hamburg December 8th, 2015

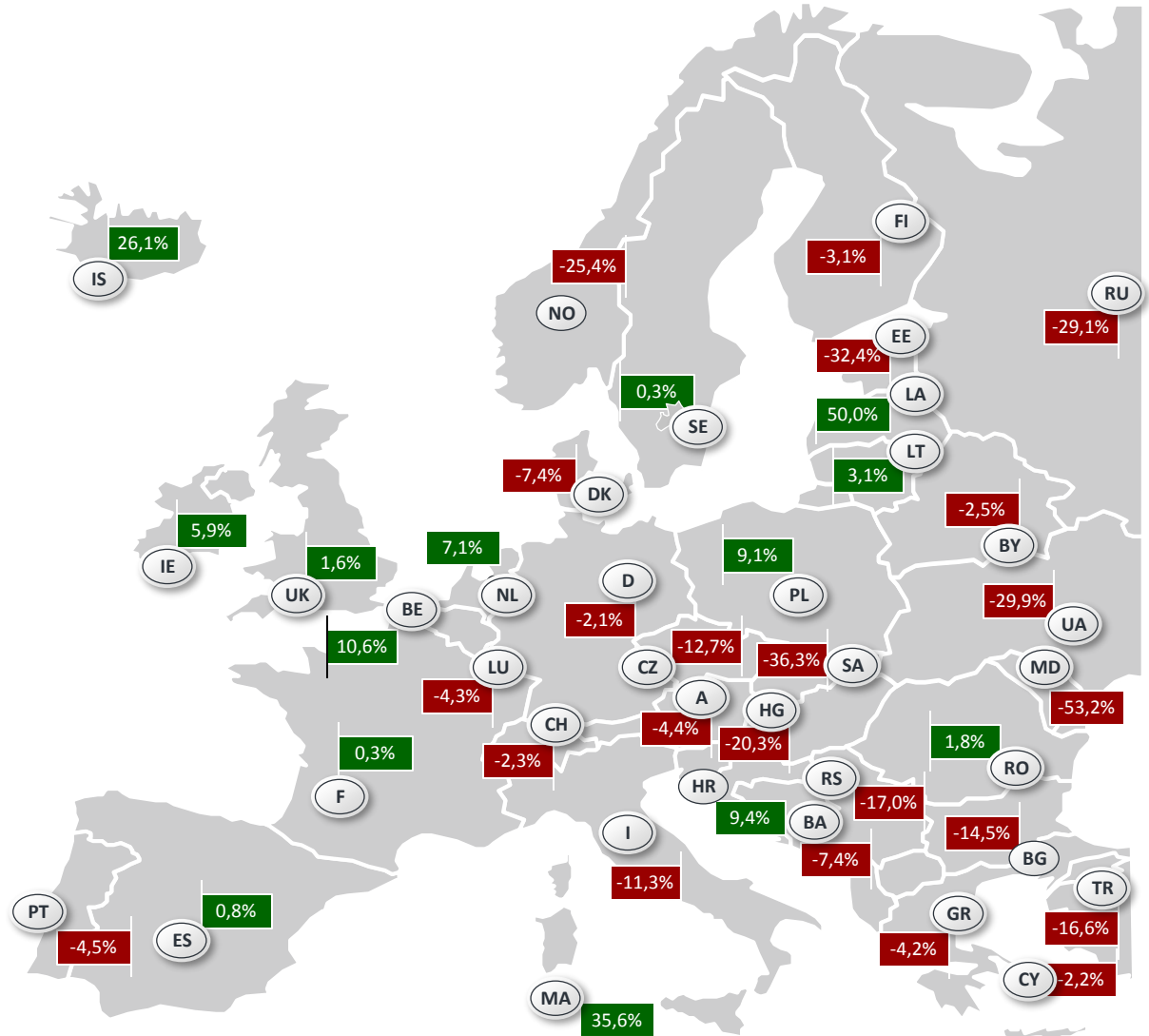


**AIRCRAFT
ACTIVITY
TRACKER**

Flight departures across Europe

Severe declines in Eastern and Central Europe, and a slump in business jet activity in Italy. France and Spain activity was flat, Switzerland down, UK up.

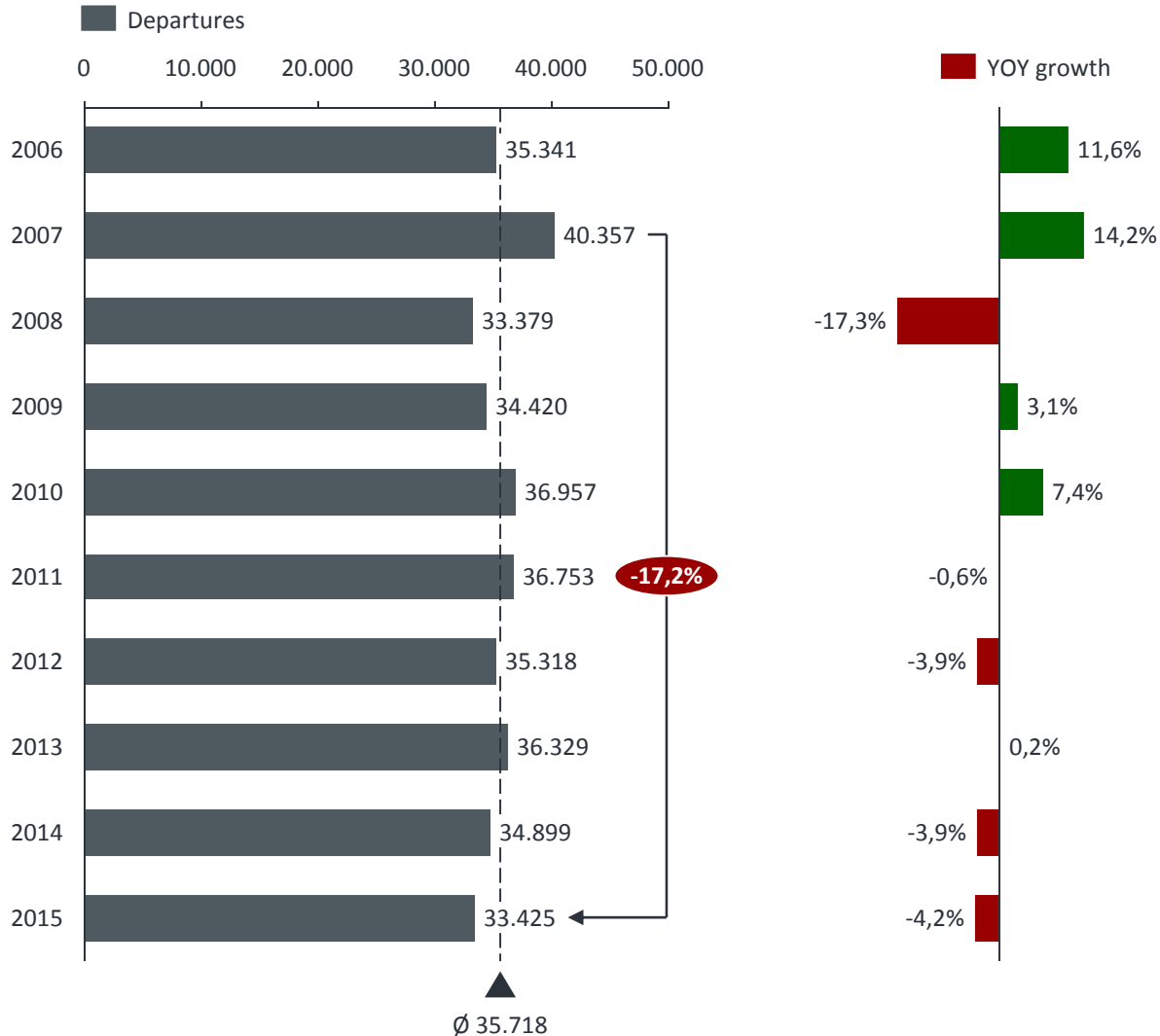
Total Europe: -4,2%
November 2015 YOY



How did November 2015 compare to previous years?

Flight activity in November 2015 was almost as low as the market trough in 2009, and total monthly flights were 17% fewer than the market peak in 2007.

November

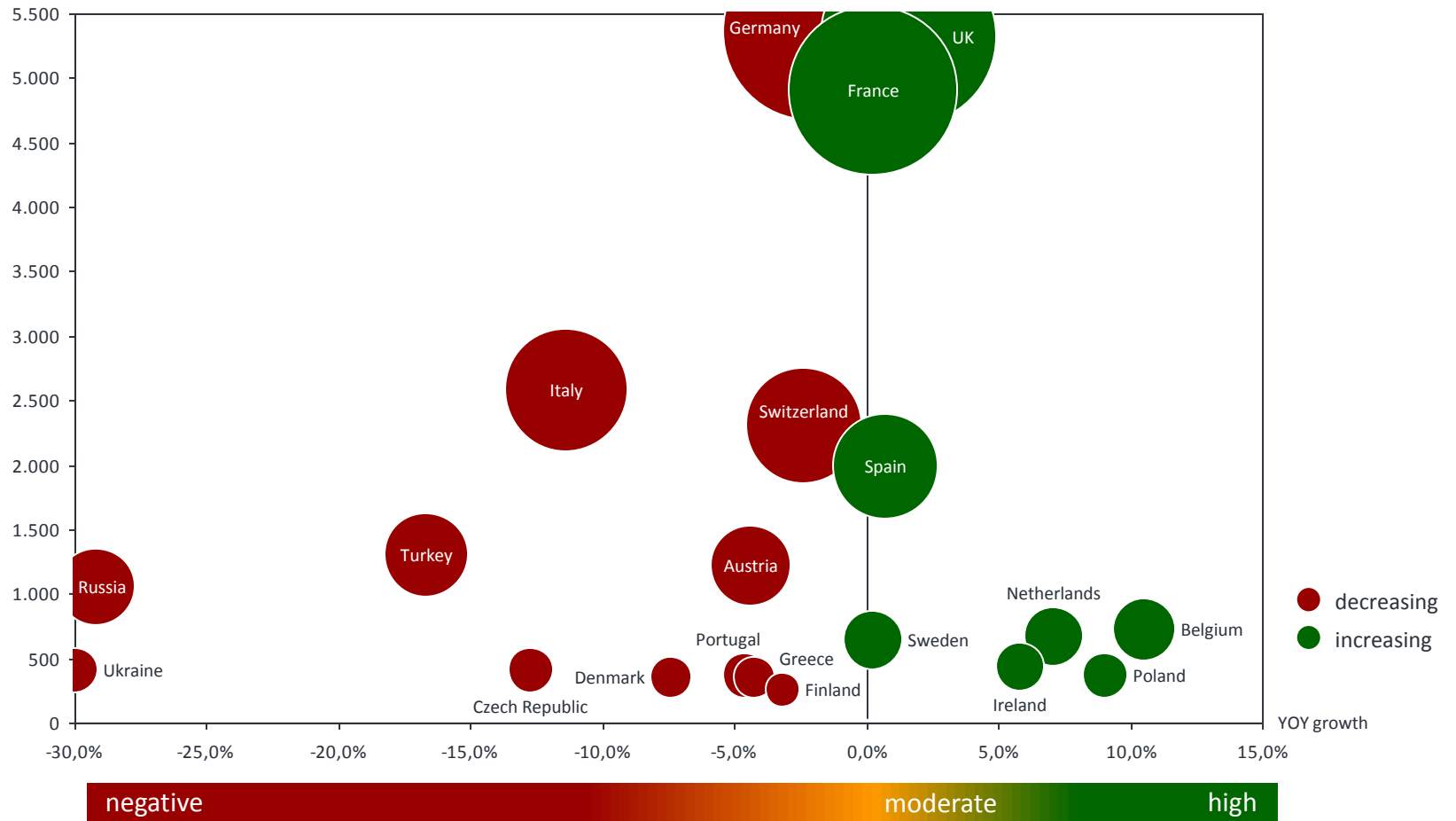


Top country markets activity in November YOY

The key markets – France, Germany, UK – were all close to flat, with the UK slightly ahead, Germany a bit behind. Belgium was well up, Italy, Czech Republic, Turkey, Russia well back.

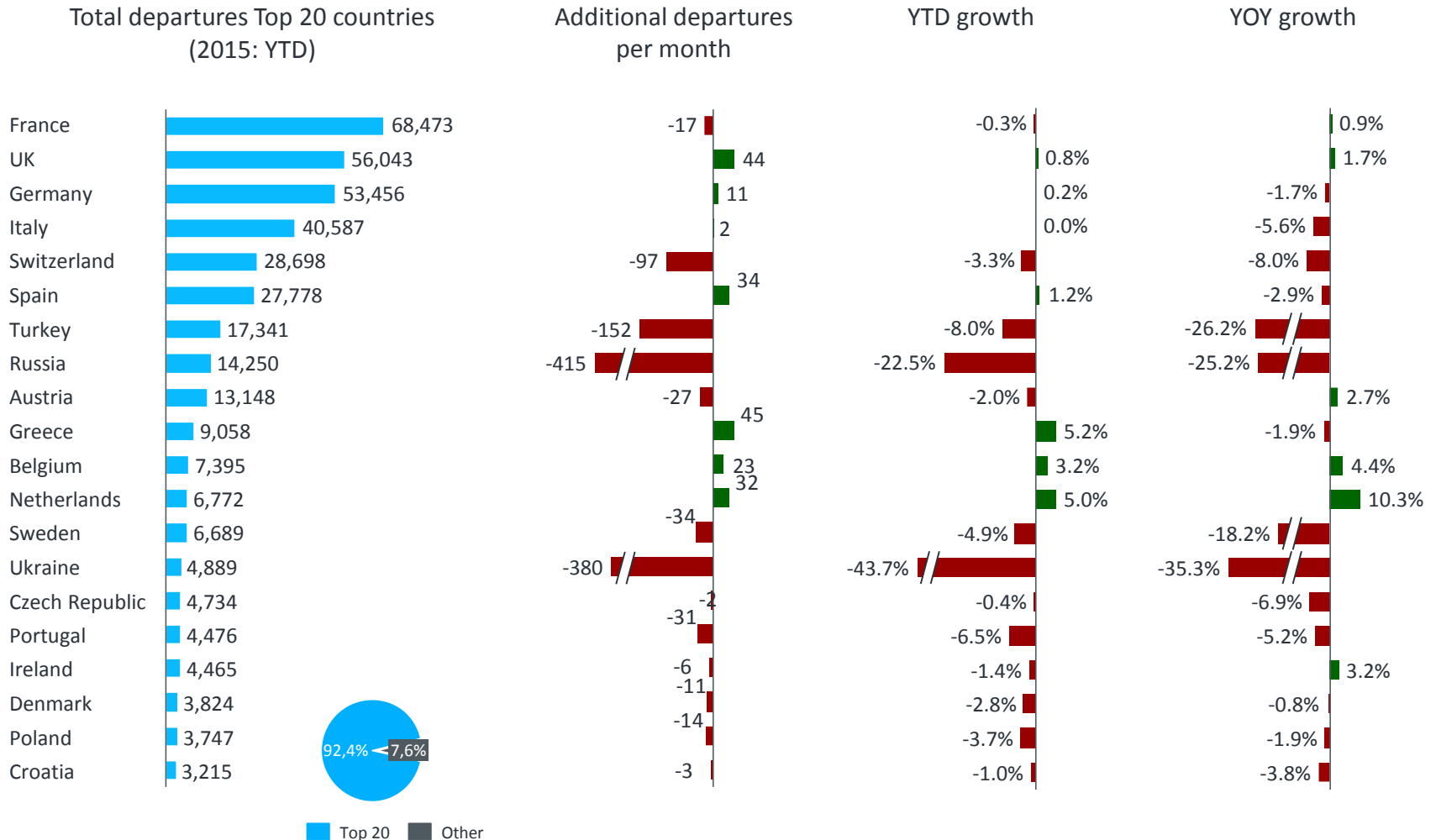


Departures November 2015



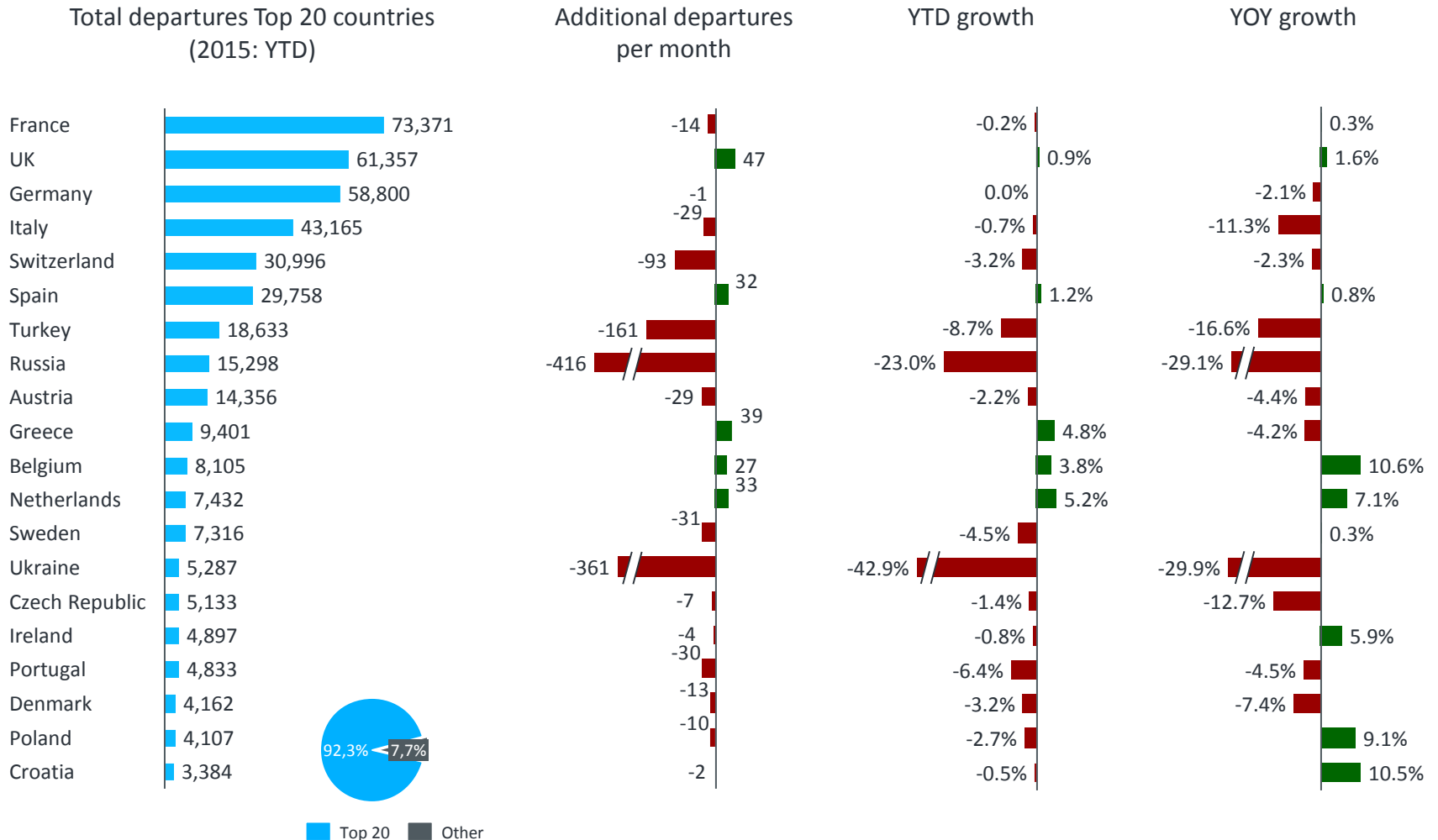
European growth pattern in Top 20 countries YTD

The two top 10 countries showed growth in flights this month, but several secondary markets lost >20% YOY. YTD 2015 activity is still just about up for 4 of the top 6 countries in Europe.



European growth pattern in Top 20 countries YTD

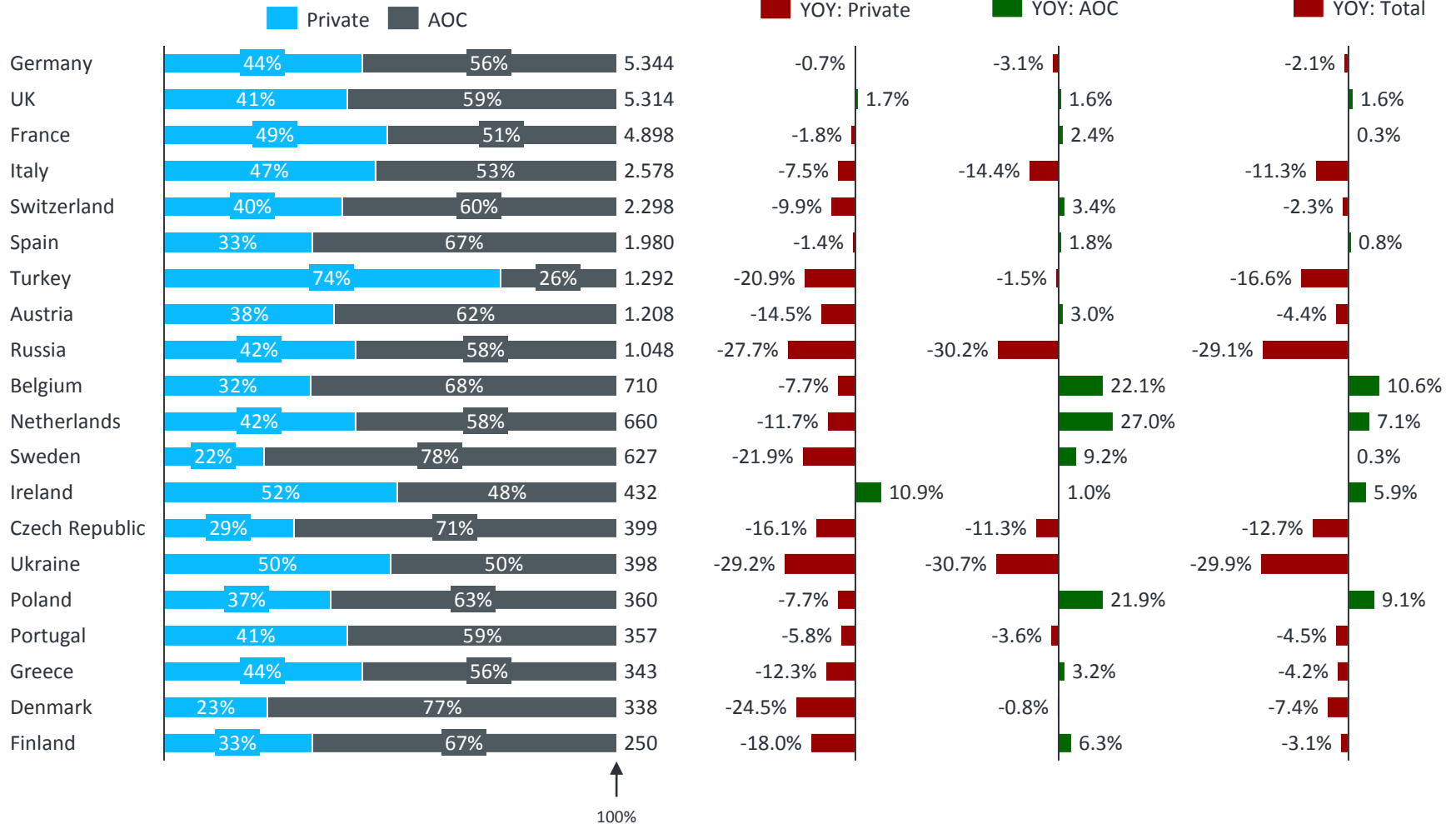
3 of the top 10 countries saw some growth this month, though only UK and Spain are up YTD. Activity plunged in Italy this month, although YTD trend is only -0.7%. 30% fell off the CIS market.



European growth pattern Top 20 by flight mission

12/20 countries saw an increase in AOC business jet flights this month, solidly up in France, Switzerland, Austria, well up in Benelux and Poland. Private flights up only in UK & Ireland.

Total departures Top 20 countries
(November 2015)



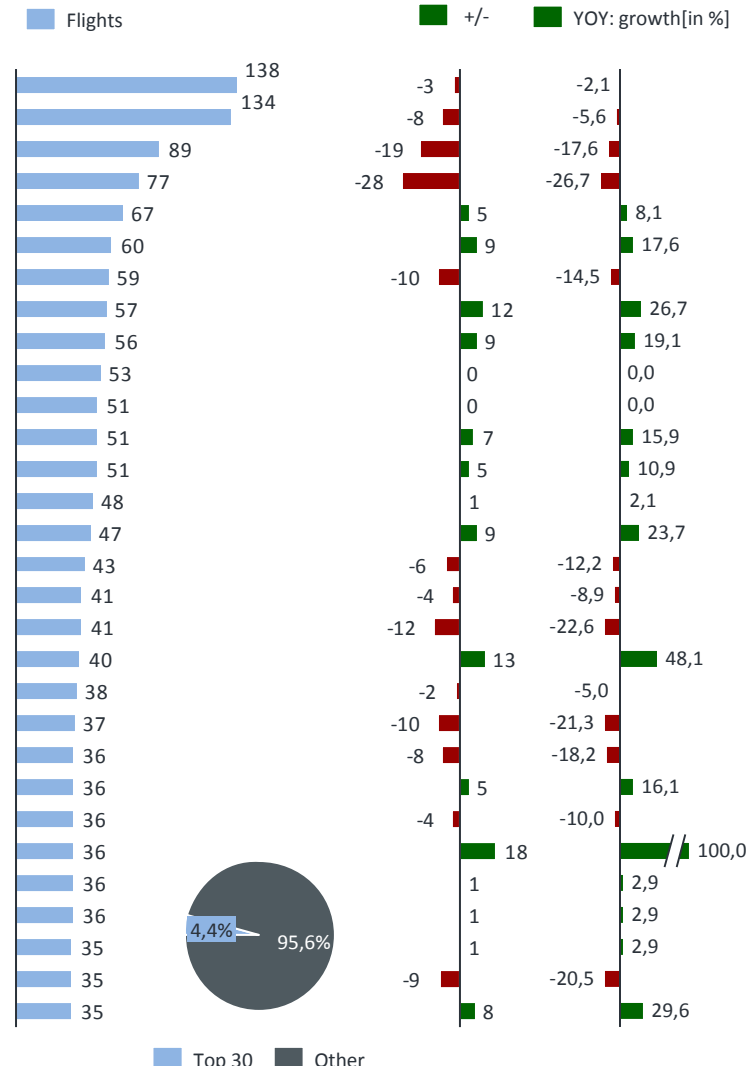
Top 30 City Pairs in November

The busiest city pair for business jet departures in November was LFPB-LSGG, 138 flights, flat YOY. The largest increases came on LFPB-EGGW, EDDB-EDDM and LFPB-EGKB.

Top 30 City Pairs – November 2015



- LFPB-LSGG
- LSGG-LFPB
- LIML-LIRA
- LIRA-LIML
- EGGW-LFPB
- LSGG-LFMN
- LFPB-LFMN
- LFPB-EGGW
- LFMN-LFPB
- LFPB-EGLF
- LFMN-LSGG
- EGLF-LFPB
- EGGW-UUWW
- LEMD-LEBL
- EGGW-LSGG
- UUWW-EGGW
- LSGG-EGLF
- LFMN-UUWW
- EDDB-EDDM
- LOWW-UUWW
- LEBL-LEMD
- LSZH-LFPB
- LSGG-EGWU
- LIML-LFPB
- LFPB-EGKB
- LFBD-LFPB
- EGWU-LSGG
- LSGG-EGGW
- LFPB-LSZH
- EGNO-EGLF

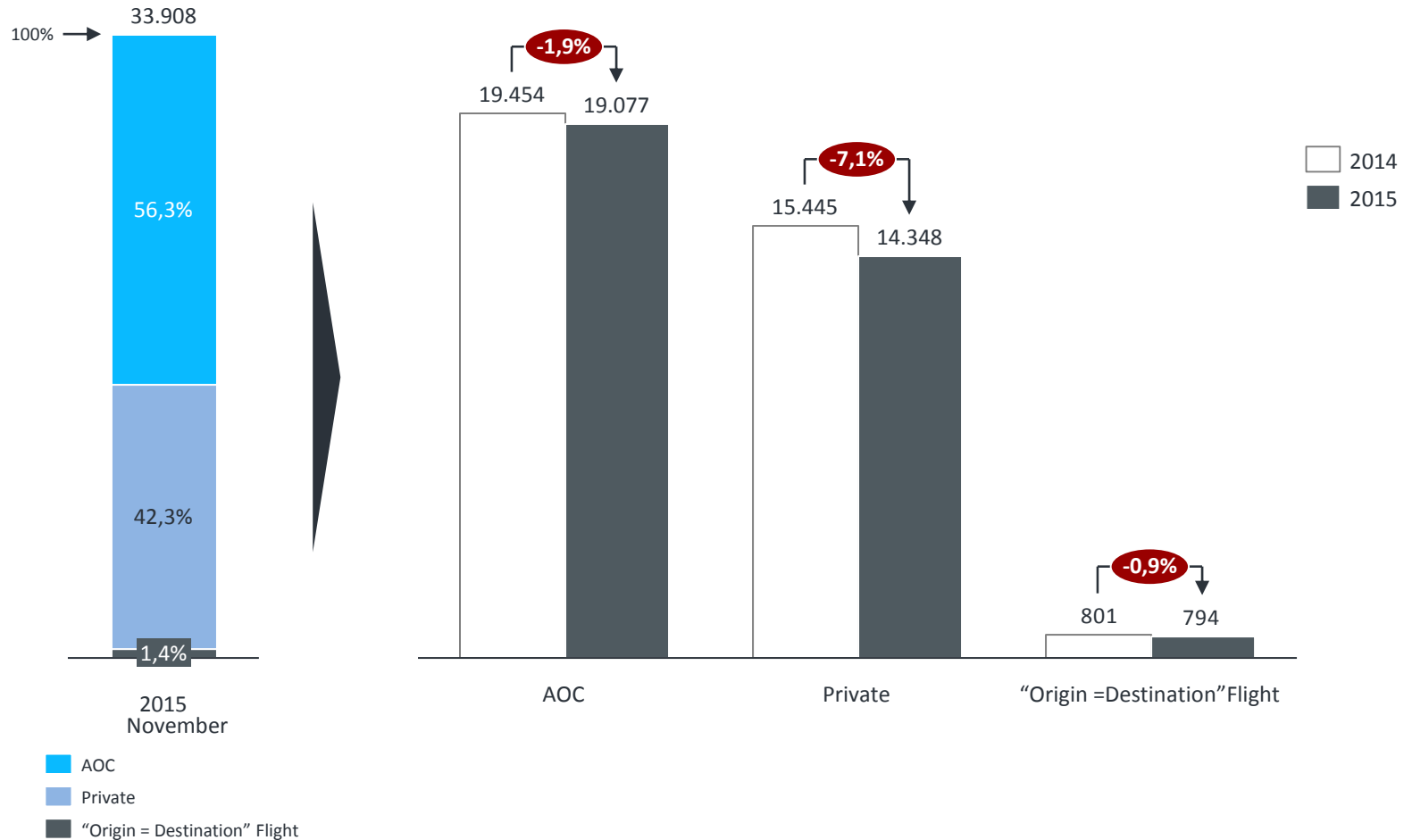


Note:

- In this chart business pistons are excluded.
- City Pairs to North America are not shown on the map, to avoid image distortion

Activity by flight filing (mission type)

AOC business jet activity only slightly declined in November, and comprised 56% of all business jet sectors. Private flights dropped significantly, falling 7% YOY.

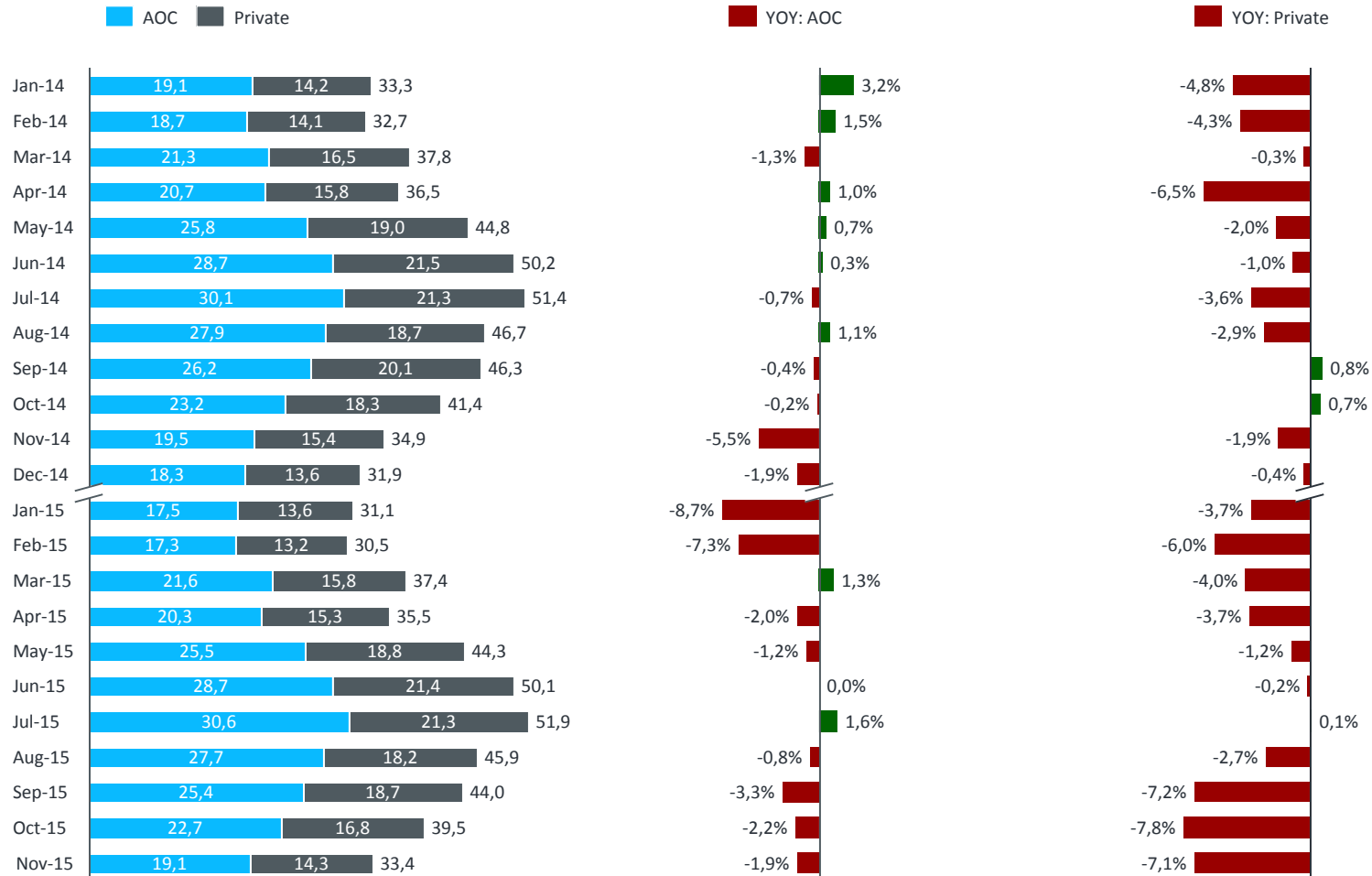


Note:
Origin=Destination flights (mostly training) not shown on other pages

Monthly departure trends by mission type

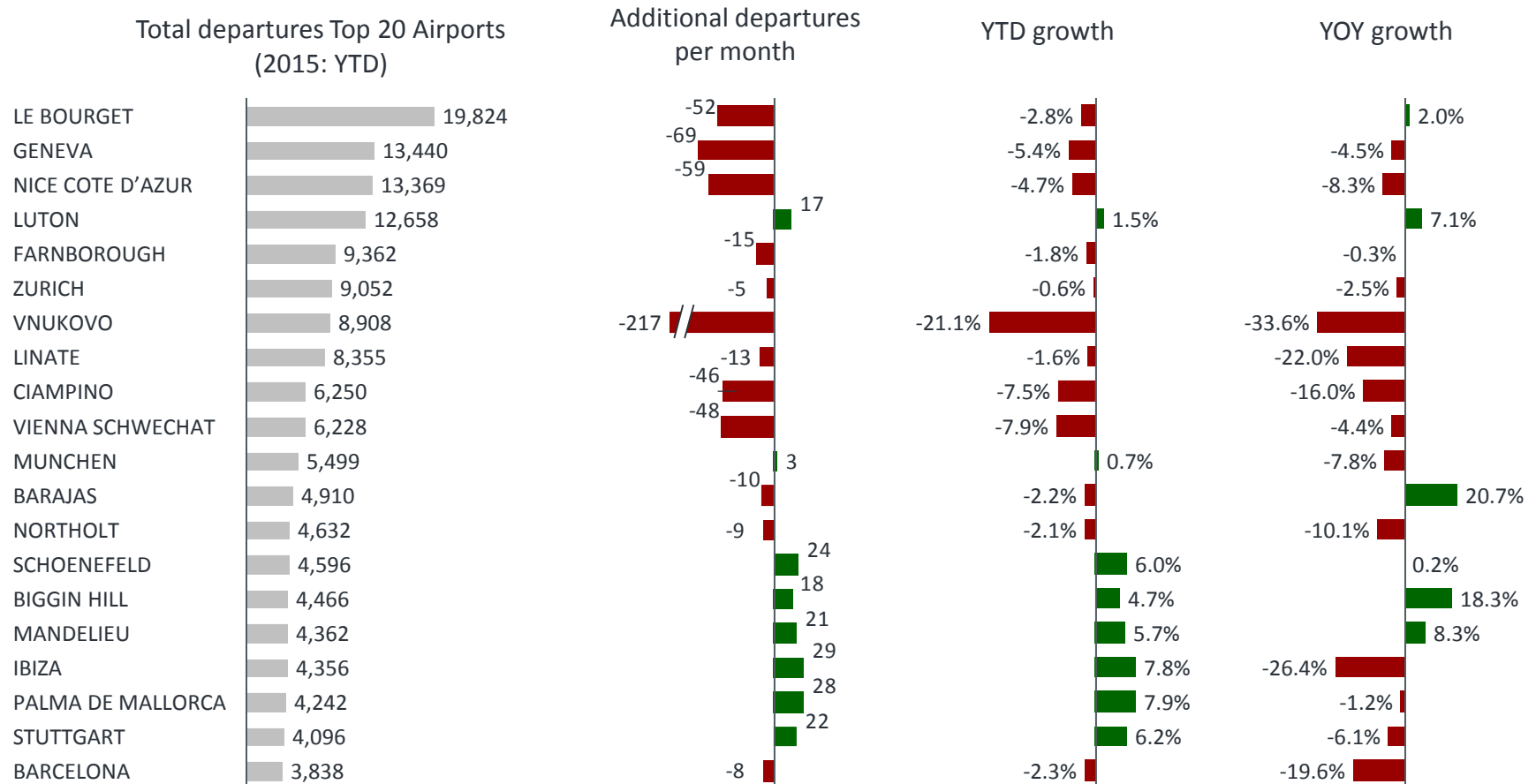
Since September 2014, AOC activity has increased twice, Private activity three times. The recent declining trend is around 3% for AOC, and 7% for Private flights.

Thds. of departures



Top Airport flight departures in November and YTD

Business jet activity increased YOY at top airport Le Bourget, up as much as 7% at Luton, the airport with strongest YTD trend. Nice and Geneva well down, with YTD trends of -5%.

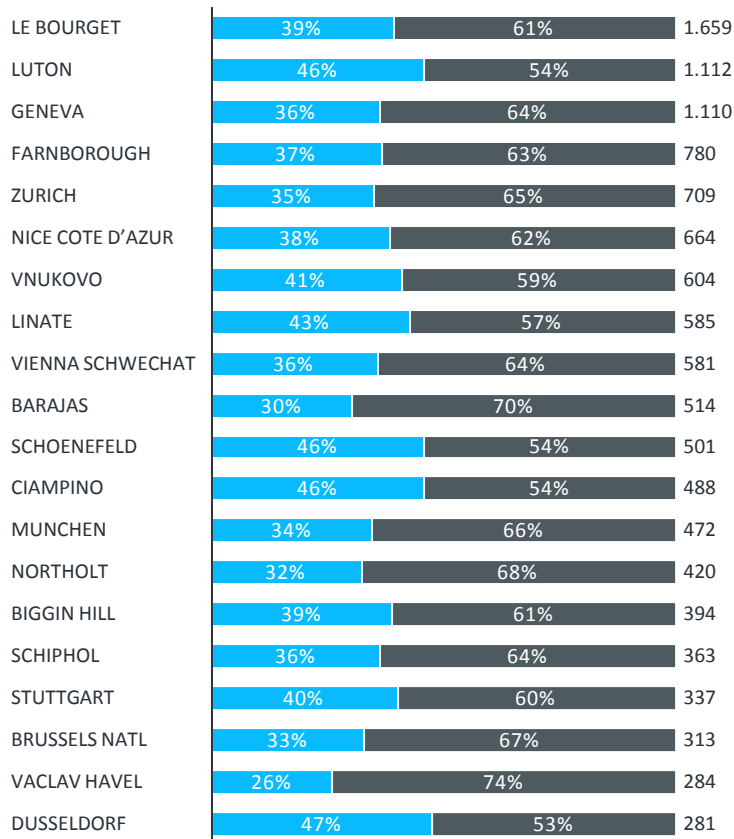


Top 20 Airports activity by mission profile

Top 5 airports all saw growth in YOY AOC flight departures, 11% at Luton. AOC activity also well up at Barajas, Biggin Hill, Schiphol, Brussels. Private activity down at 9 of top 10 airports.

Total departures Top 20 Airports
(November 2015)

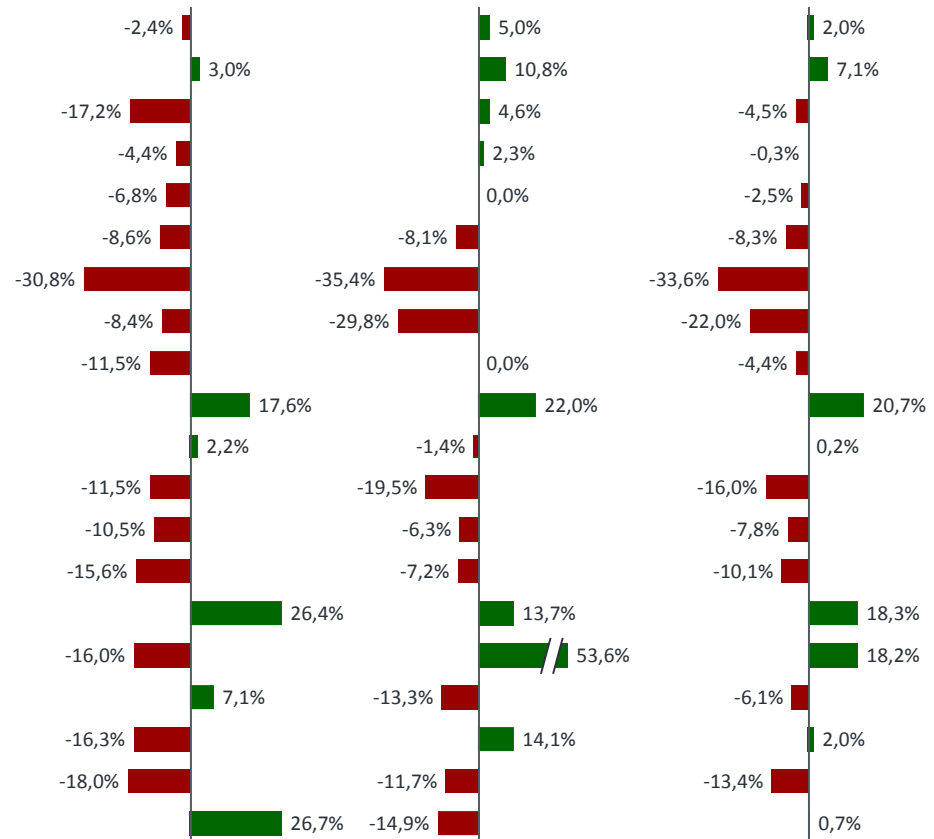
Private Commercial / AOC



YOY growth
Private

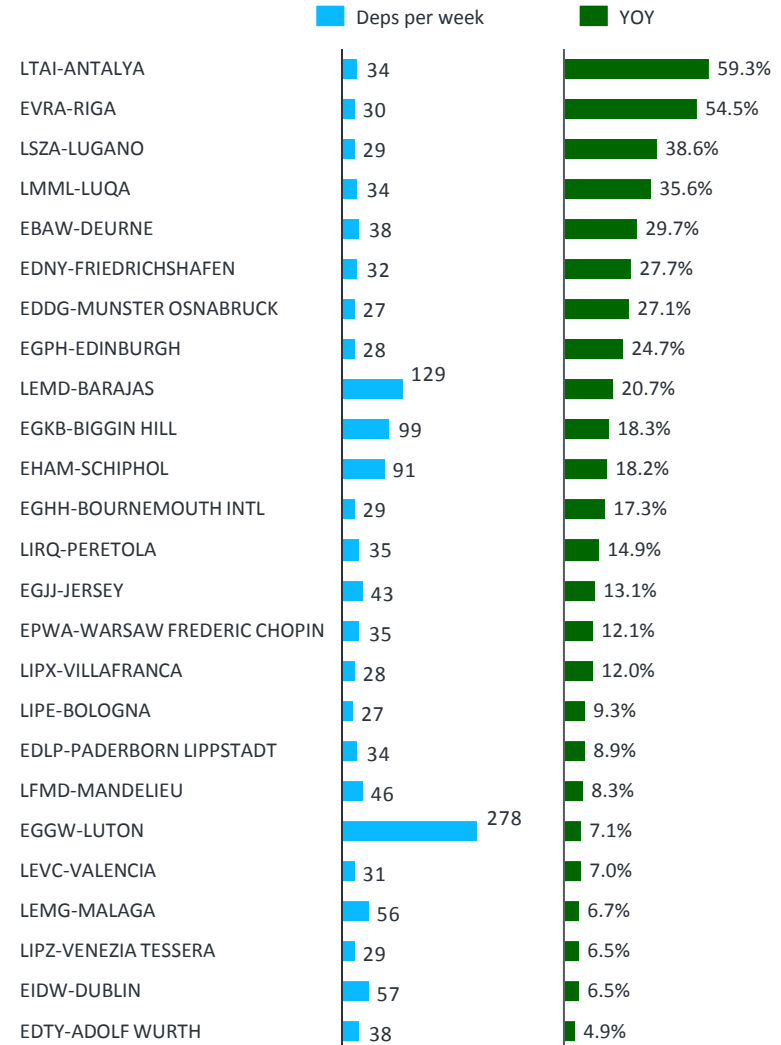
YOY growth
AOC

YOY growth
Total



Best performing airports by activity November 2015 YOY

Busy airports with significant growth this month included Barajas, departures up 21% YOY, Schipol, up 18%, Biggin Hill, up 18%, and Luton, up 7%.



Note:
▪ Threshold for consideration in this analysis is more than 10 departures per week

Executive Summary: November 2015

- There were 33,425 business jet departures in Europe in November 2015, a 4.2% decline year on year. With one month of the year to go, 2015 activity is down 2.7% on 2014, equivalent to 12,275 fewer flight departures.
- Russia saw the largest decline this month, with 431 fewer flights, 29% less activity year on year. So far in 2015, flights from Russia into Europe have declined 23%. Flights from Europe to the CIS region have fallen 27% during 2015.
- Europe's two busiest business jet markets, France and UK, were up this month. Flights were down slightly in Germany and Switzerland, and slumped 11% in Italy. The YTD analysis shows only the UK up so far in 2015.
- AOC business jet activity was up in 6/10 markets this month, relatively strong in Switzerland, and substantially increasing in smaller markets like Belgium, Netherlands, Sweden, Poland.
- Private flight activity on business jets receded 7% this month. It was up in the UK but this was one of only 2 of top 20 markets to see growth. Declines in France and Germany were slight, but very substantial in Switzerland, Austria, Turkey, Russia.
- The business jet OEM fleet with largest decline in Private flights was Embraer, sectors reduced by 27% YOY. Bombardier and Hawker jets also saw >10% declines in Private activity. Private flights increased on CJ1 and Falcon 2000 jets.
- AOC flights increased by 13% on VLJs, and by 23% on Super Midsize jets. Challenger 300 and Phenom 300 jets grew YOY activity more than 60%. ULR jets continued to increase activity, flight hours up 5% YOY, operating 13% of all business jet sectors.
- Activity at busiest airport Le Bourget increased 2% this month. Flights up 7% at Luton, driven by a 11% increase in AOC activity. Top Italy airports Linate and Ciampino were down 22% and 16% YOY, respectively.

Definitions

- › The charts illustrated in this analysis source data from national business aviation associations, Eurocontrol, and the FAA, covering 50 European, Middle Eastern and North African national territories.
- › All data analysis is carried out by WINGX Advance through our proprietary activity tracking methodology.
- › We cover all types of private (owner) and commercial (AOC) flight. AOC flights include charter and special mission activity such as medical flights. We exclude maintenance and training flights.
- › Illustrated flight activity analysis pertains to all IFR registered flights within Eurocontrol territories and between Eurocontrol territories and the rest of the world.
- › The analysis covers all single and multi engine business aviation aircraft categories: Jets, Turboprops and Pistons, equating to more than 300 aircraft types.
- › Jet aircraft activity is segmented by cabin/range capability: Ultra Long Range, Heavy Jet, Super Mid-size Jet, Mid-size Jet, Super Light Jet, Light Jet, Entry Level Jet, Very Light Jet.
- › All aggregate activity represents business jet activity only. Wherever Turboprop and Piston activity is shown it is separately broken out.
- › Aircraft utilisation is measured by number of flight departures and the related number of flight hours. Our analysis does not include Overflights.
- › The analysis is shown for the preceding calendar month; it is compared to the previous year same month (YOY or Year on Year), and to the current total activity for the year (YTD or Year to Date).

DISCLAIMER:

The recipient of the Business Aviation INSIGHT, acknowledges the underlying terms and conditions as published on the WINGX Advance website.